



ALAMEDA COUNTY

Boards, Commissions and Committees



GET INVOLVED!!

Alameda County Mission

- To enrich the lives of Alameda County residents through visionary policies and accessible, responsive and effective services.

Vision

- Alameda County is recognized as one of the best counties in which to live, work and do business.

Values

- Integrity, honesty and respect fostering mutual trust.
- Transparency and accountability achieved through open communications and involvement of diverse community voices.
- Fiscal stewardship reflecting the responsible management of resources.
- Customer service built on commitment, accessibility and responsiveness.
- Excellence in performance based on strong leadership, teamwork and a willingness to take risks.
- Diversity recognizing the unique qualities of every individual and his or her perspective.
- Environmental stewardship to preserve, protect and restore our natural resources.
- Social responsibility promoting self-sufficiency, economic independence and an interdependent system of care and support.
- Compassion ensuring all people are treated with respect, dignity and fairness.



INTRODUCTION

One of 58 counties in California, Alameda County is home to 1.5 million people, representing just over 4% of the population of California. The County has 14 incorporated cities, from Albany in the north to Fremont in the south and Livermore in the east, as well as in 6 unincorporated communities and rural areas throughout the 813 square miles of the County. Alameda County provides health care, social services, public protection, and general government programs for one of the most ethnically, culturally diverse populations in the nation. County services are provided by a workforce of approximately 9,500 employees, working to support the business needs of 21 different Agencies and Departments.

Since 1853, the Board of Supervisors has encouraged citizen involvement and expertise to assist them in serving the community. These bodies were established to help the Board of Supervisors deal with the varied duties and responsibilities of local county government. These bodies are created by State or Federal law, County ordinance or by action of the Board of Supervisors and provide forums for citizen input and accessibility to county government. The Board relies on these groups to advise them on a wide-range of issues affecting their constituencies and to ensure they are responsive to community needs.

Board, Commission and Committee responsibilities range from short-term task oriented to long-term with broad based jurisdictional responsibilities. There are bodies for County Service Areas, health and human services, criminal justice, elderly, planning, land use, property assessment appeal, fish and game, libraries, housing, and others.

Staff support is provided for many but not all Boards/Commissions. Support includes: planning and coordinating commission activities, meetings/hearings and responsibility for convening newly established commissions and providing an overview to all newly-appointed commissioners on meeting schedules and Board/Commission procedures.

PARTICIPATING IN LOCAL GOVERNMENT

Alameda County is governed by a five-member Board of Supervisors directly elected by voters in their respective districts.



BOARD OF SUPERVISORS

County Administration Building
1221 Oak St., Fifth Floor, Suite 536
Oakland, CA 94612

District 1: Scott Haggerty (510) 272-6691

District 2: Richard Valle (510) 272-6692

District 3: Wilma Chan (510) 272-6693

District 4: Nate Miley (510) 272-6694

District 5: Keith Carson (510) 272-6695

The Board of Supervisors sets policy and oversees all County operations.

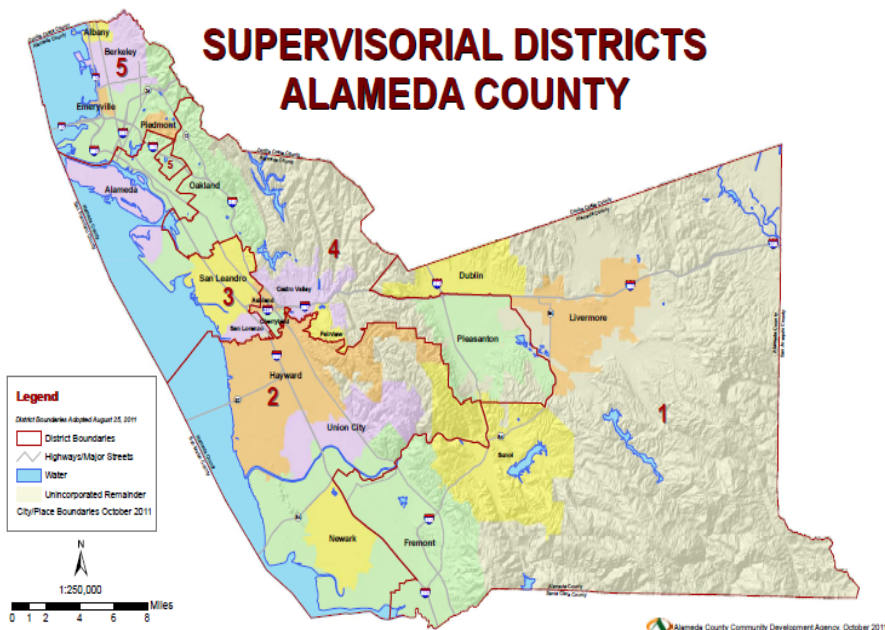
The County is comprised of 14 Cities

(Albany, Alameda, Berkeley, Dublin, Emeryville, Fremont, Hayward, Livermore, Newark, Oakland, Piedmont, Pleasanton, San Leandro and Union City) and 6 unincorporated areas (Ashland, Castro Valley, Cherryland, Fairview, San Lorenzo, and Sunol).

There is an ongoing need for all interested Alameda County residents to apply for positions on commissions which are of interest to them. Each body has an issue, policy and/or program focus and appointees generally represent defined communities of interest.

Many bodies have established Bylaws outlining the mission, purpose and specific details on the function of the group. This document can be very useful in orienting appointees to the specific charge/focus of their assigned commission, its authority and relationship to the Board of Supervisors. Most have a sponsoring County Agency or Department and a staff liaison assigned to the body. The staff liaison serves as an excellent information resource.

The Board of Supervisors rely upon Boards, Commissions and Committees to identify common ground on specific issues, indicate program priority preferences and provide input on existing and proposed public programs. The most productive and effective bodies are those whose members are clearly committed to fulfilling the mission and goals. It is also important for the members to maintain a





strong relationship with their appointing authority and staff liaisons, keeping them informed of public service needs falling within the scope of the Board/Commission's scope of work.

All Boards, Commissions and Committees are public bodies; it is the intent of the law that their actions be taken in open session. (Government Code section 54950). All meetings are open to the public and most are subject to the requirements outlined in the Ralph M. Brown Act. The public is encouraged to attend and may comment on matters being considered.

APPOINTMENTS

Generally, there are three types of appointments made by the Board of Supervisors.

Supervisory District Appointments: Many bodies have positions based on residency in a specific supervisory district. Applications for such appointments are reviewed and appointment recommendations are made by the Supervisor representing that district.

At Large/Boardwide Appointments: Many positions are open to applicants without regard to residency in a specific supervisory district. In this instance, any of the supervisory districts may interview and recommend a candidate for appointment to a body to the Board President. The President places the final recommendation for appointment on the Board of Supervisors' agenda for consideration.

Community Based Appointments: Certain appointments are based upon specific affiliation with a group or community. The Board of Supervisors receives recommendations from a specific constituency. For example: there are 4 Veterans' Memorial Building Commissions (Albany, Hayward, San Leandro, and Washington Township) Each body has specific positions for individuals representing organizations who have served in the Armed Forces. The nominations for appointments are made by various veterans organizations then submitted to the incumbent commission for each building. Final recommendations are then forwarded by the incumbent body to the President of the Board of Supervisors for consideration and placement on the Board of Supervisors' agenda.



TERM OF OFFICE

Appointment terms are established by statute, board action or by-laws of the body. If the position being filled is vacant, the appointment date is the day the Board approves the appointment, but may be a date specified by the appointing authority. The term expires at the end of the full-term delineated in the by-laws (i.e. 2, 3, or 4 year terms). In some cases, there are bodies with no term limit identified in its enabling document. In these cases the term limit is governed by the Board of Supervisor's Operating Procedures (#15 Boards and Commissions: Terms of Office) which limits the term to not more than 12 years of consecutive service on a body.

NOTE: All appointees to a Boards, Commissions and Committees must be residents of the County of Alameda, unless such residency requirement is waived by a majority vote of the members of the Board of Supervisors. Grounds for waiver may include, but are not limited to: lack of availability of County residents who are willing to serve on a Board or Commission or an individual who is a non-resident but has special qualifications that are necessary for the position.

VACANCIES

The Boards and Commissions database is maintained by the Clerk of the Board's Office. On or before December 31 of each year, the Clerk of the Board is mandated to post a report listing vacant and/or expiring seats that are appointed by the Board of Supervisors. The list contains all appointive terms, which will expire during the next calendar year; with the name of the incumbent, date of appointment, date the term expires and the necessary qualifications for the position. (Government Code section 54972)

This vacancy report is posted annually in the Clerk of the Board's Office at 1221 Oak Street, Suite 536, Oakland, CA and on our website at <http://www.acgov.org/clerk/vacancy.htm>. If you have an interest in a specific body and no vacancy is shown, please contact the Clerk of the Board's Office at (510) 208-4949 to inquire about current vacancies.



The Clerk of the Board's Office is also responsible for posting a public notice when an unscheduled vacancy occurs on any Board/Commission, whether due to resignation, death, termination, or other causes. The unscheduled vacancy notice is posted for public viewing in the County Administration Building, 1221 Oak Street, Suite 536, Oakland, CA on the 1st and 5th floors. Final appointments to a body can be made by the Board of Supervisors after the notice has been posted for at least 10 working days in the Clerk's Office. (Government Code section 54974)

If the position is available due to an unscheduled vacancy, the appointee may be appointed to the remainder of the term not completed by the vacating member. Reappointment is at the discretion of the appointing authority.

TERMINATION

Notwithstanding any provision of any County ordinance or resolution, and except as otherwise provided by State or federal statute, any member of a Board, Commission or Committed who has been appointed by the Board of Supervisors may be removed at any time by majority vote of the Board. (Administrative Code Section 2.64.040)

APPLICATION PROCESS

The Board of Supervisors appoints Alameda County residents to serve as a Board Member/Commissioner on a volunteer basis. An application must be completed and the applicant must meet the qualifications and represent the constituency identified for the commission vacancy.

Please be aware that information disclosed in the Board and Commission Application is subject to public disclosure. To obtain an application and/or information about Boards, Commissions and Committees, please visit our web page at <http://www.acgov.org/bc/>.

Return the completed application to the appropriate appointing or nominating authority, i.e., a Member of the Board of Supervisors, or the Agency or Department recommending the appointment. You will be notified by the appointing authority when you are being considered for appointment.



If you have an interest in a specific body or need further information about the appointment process, please contact the Clerk of the Board’s Office at (510) 208-4949. The Office is located at 1221 Oak Street, Suite 536, Oakland, CA 94612. Normal office hours are 8 a.m. – 5:00 p.m., Monday through Friday.

To listen to our Board of Supervisors meetings “live”, view the County ordinances/charter, and more, please visit our website at www.acgov.org. We encourage you to learn more about the County of Alameda! **GET INVOLVED!!**

Photography by Michael Rock