



PROBATION
Alameda County Probation Department

ALAMEDA COUNTY PROBATION DEPARTMENT

“A LOOK INTO PROBATION” **(Monthly Statistical Report)**

JANUARY 2010

Donald H. Blevins, Chief Probation Officer
William Fenton, Assistant Chief Probation Officer
400 Broadway
Oakland, California 94607
(510) 268-7233



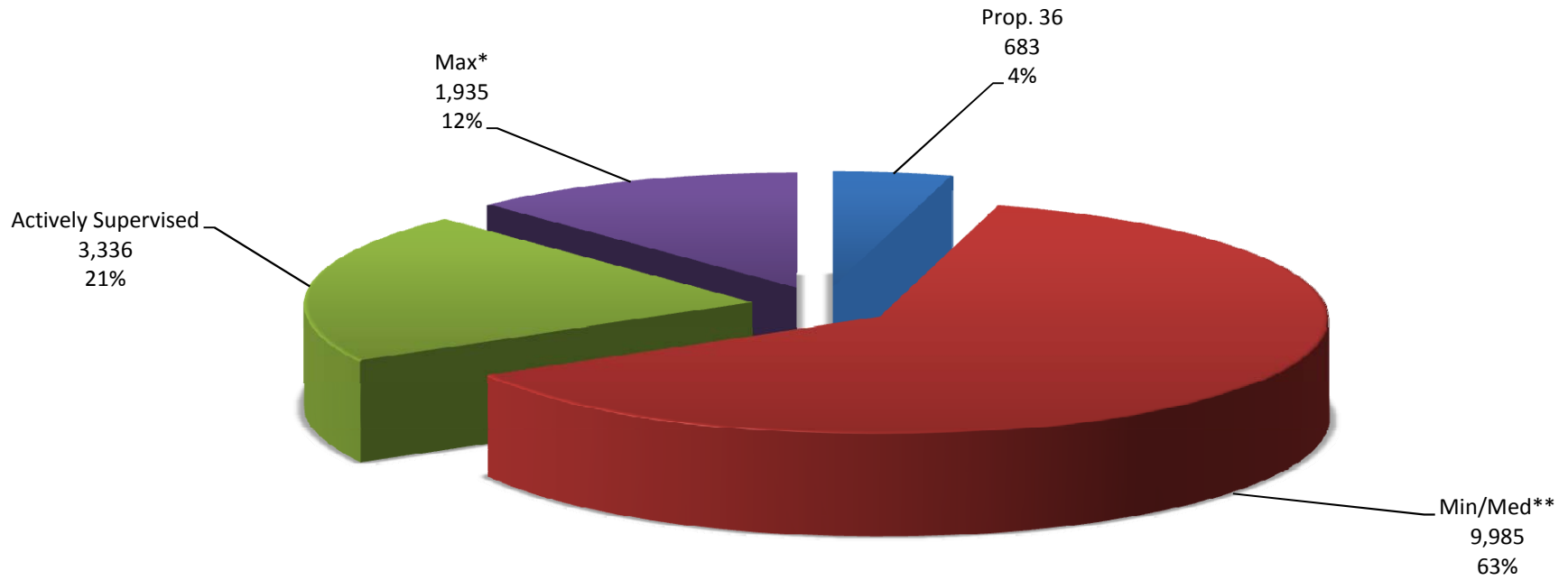
PROBATION

Alameda County Probation Department

TABLE OF CONTENTS

ADULT SERVICES	
○ Adults on Probation	1.
○ Actively Supervised Adult Cases	2.
○ Adult Investigation/Deputy Average Caseload Summary	3.
○ Adult Probationers' Demographics in Alameda County	4.
JUVENILE FIELD SERVICES	
○ Juvenile Deputy Average Intake & Investigation Workload Summary	5.
○ Juvenile Supervision Caseload Summary	6.
○ Juvenile Probationers' Demographics in Alameda County	7.
○ Juvenile Supervision Caseload and Out-of-Home Placement Summary	8.
CAMP WILMONT SWEENEY	
○ Camp Wilmont Sweeney Admissions by Ethnicity	9.
JUVENILE HALL	
○ Average Daily Population	10.
○ Electronic Monitoring, Global Positioning Satellite, and Home Supervision Summary	11.
○ Juvenile Hall Monthly Booking Report – By Ethnicity	12.
○ Juvenile Hall One-day Snapshot - Population	13.
○ Weekend Training Academy (WETA) – Monthly Snapshot	14.

ADULTS ON PROBATION January 2010 (Total: 15,939)

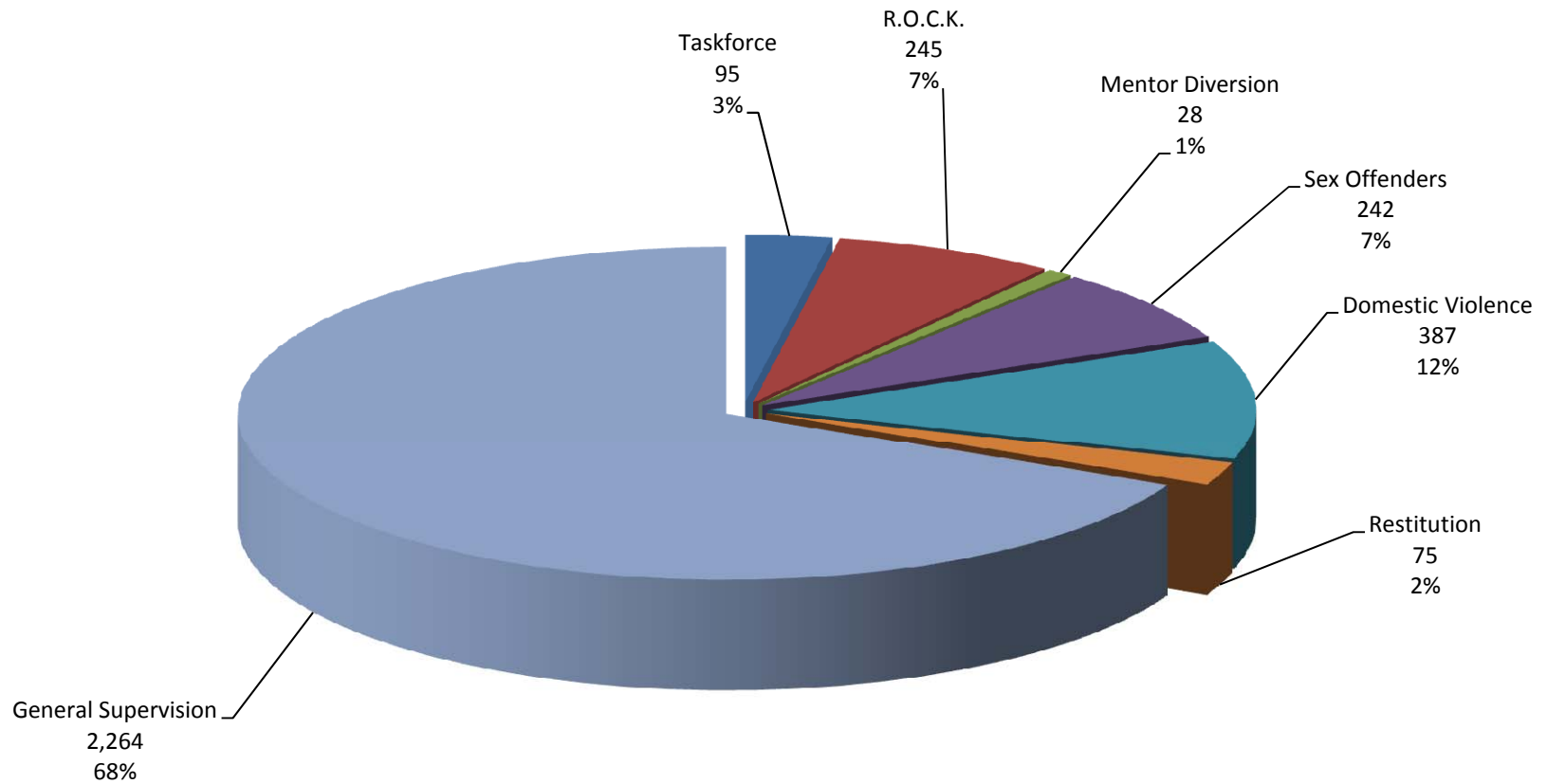


* Offenses include assault with a deadly weapon, explosives, DUI, burglary, possession of firearms. These cases are not actively supervised and only receive services as needed.

** Cases classified as Minimum/Medium level offenders. Minimum, Medium and Max cases are not actively supervised.

ACTIVELY SUPERVISED ADULT CASES

January 2010
(Total: 3,336*)

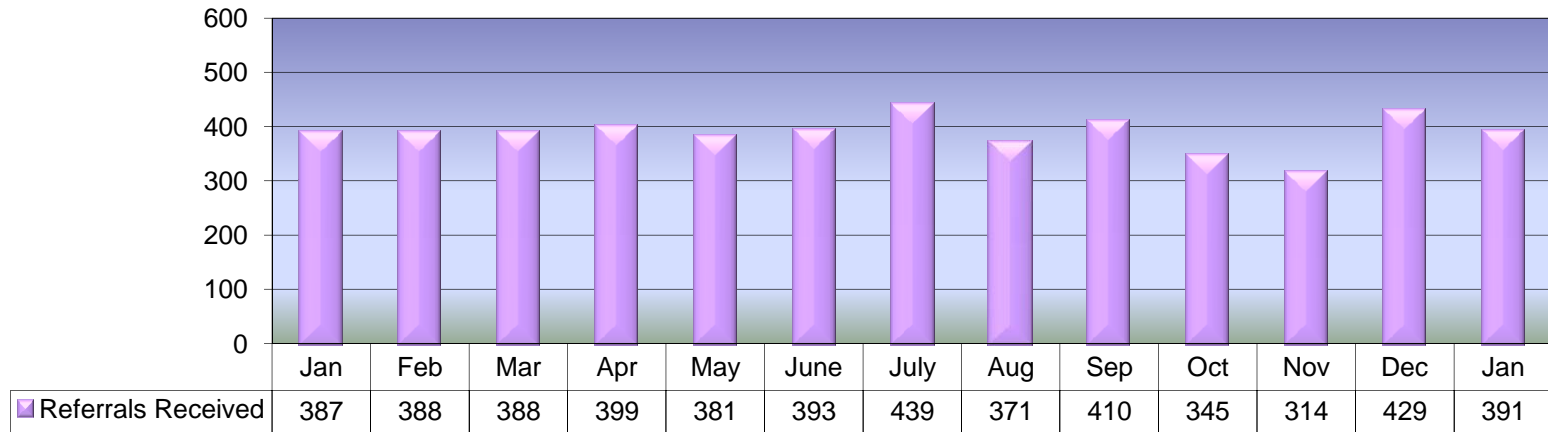


* Excludes Prop. 36 Cases

** General Supervision caseload includes violent felons as described by the 3 strikes law 667.5 (c) PC

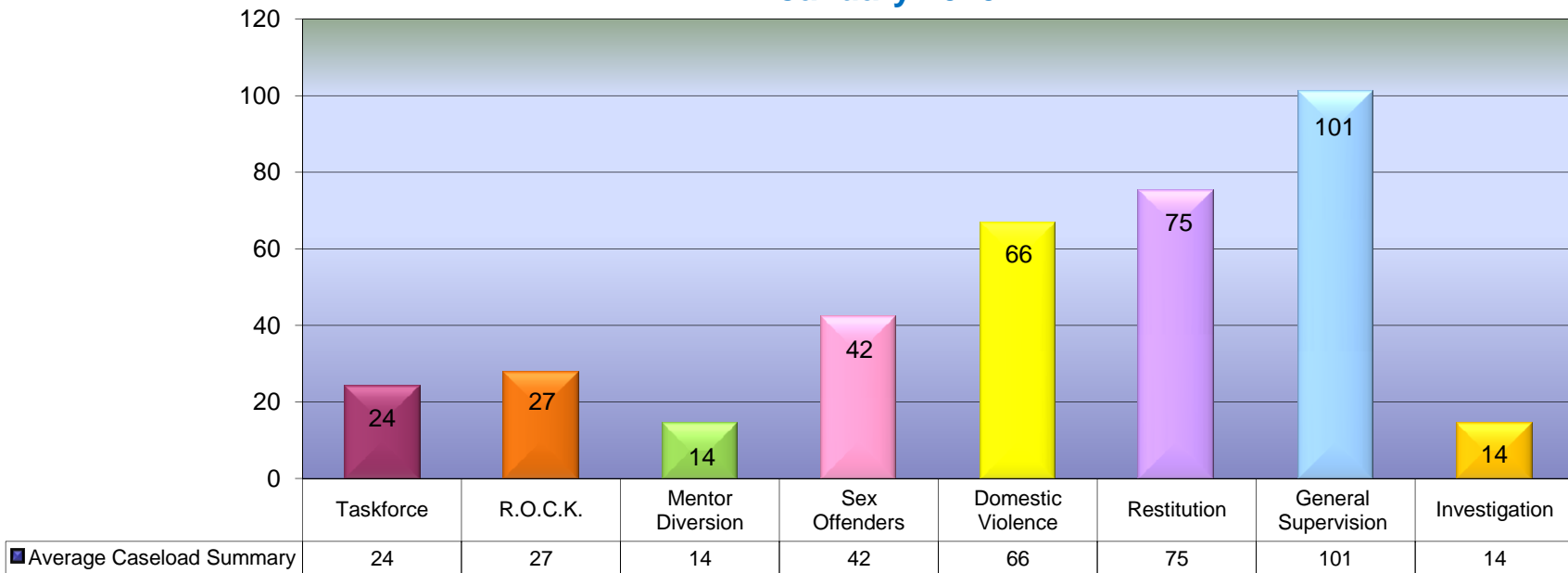
ADULT SERVICES INVESTIGATION WORKLOAD SUMMARY

January 2009 - January 2010



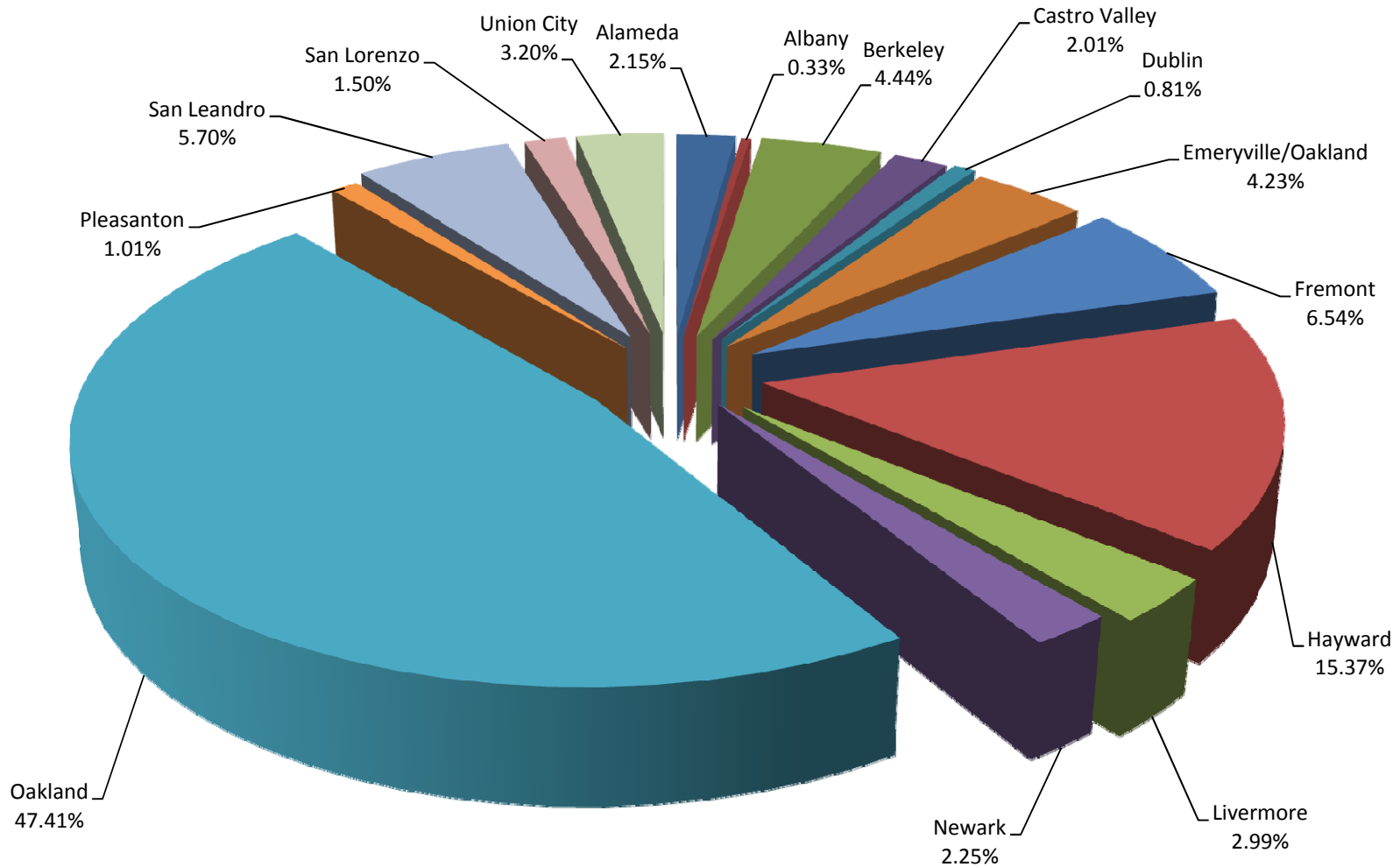
ADULT SERVICES DEPUTY AVERAGE CASELOAD SUMMARY

January 2010

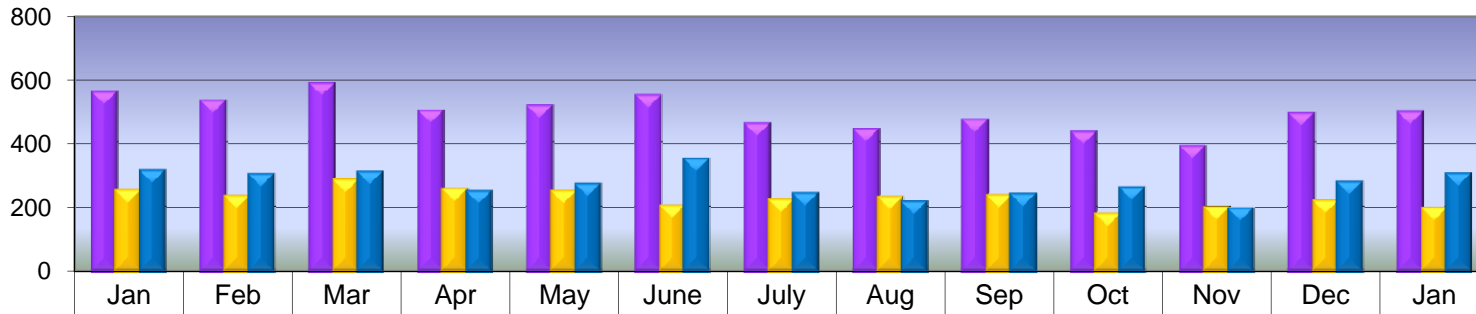


CONCENTRATION OF ADULT PROBATIONERS PER CITY WITHIN ALAMEDA COUNTY

(Effective 2/1/10)

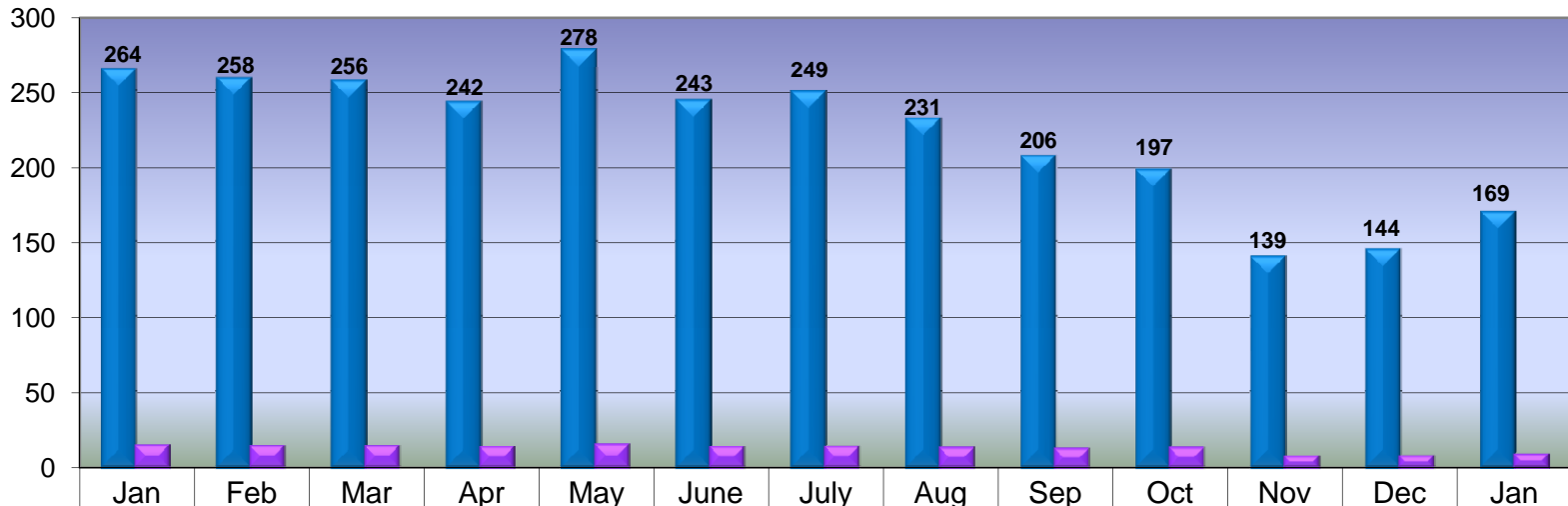


JUVENILE SERVICES INTAKE WORKLOAD SUMMARY--JAN 2009 - JAN 2010



Total Referrals	556	528	585	497	513	546	457	440	469	431	387	489	493
In-Custody	247	230	280	252	245	200	218	227	232	174	195	215	193
Out-of-Custody	309	298	305	245	268	346	239	213	237	257	192	274	300

JUVENILE SERVICES INVESTIGATION WORKLOAD SUMMARY--JAN 2009 - JAN 2010

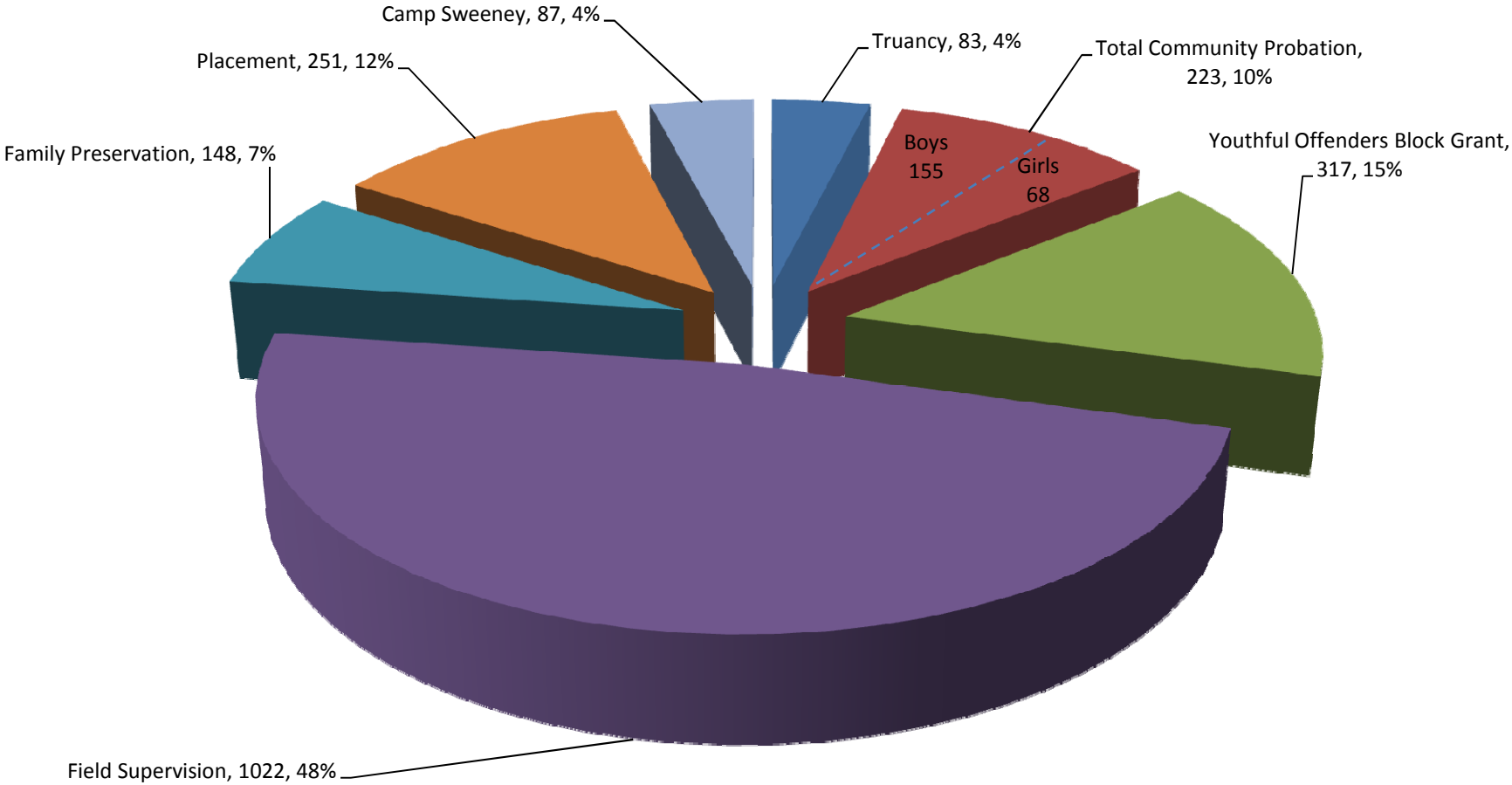


Total Investigations	264	258	256	242	278	243	249	231	206	197	139	144	169
Average Per DPO	13	13	13	12	14	12	12	12	11	12	6	6	7

JUVENILE SUPERVISION CASELOAD SUMMARY

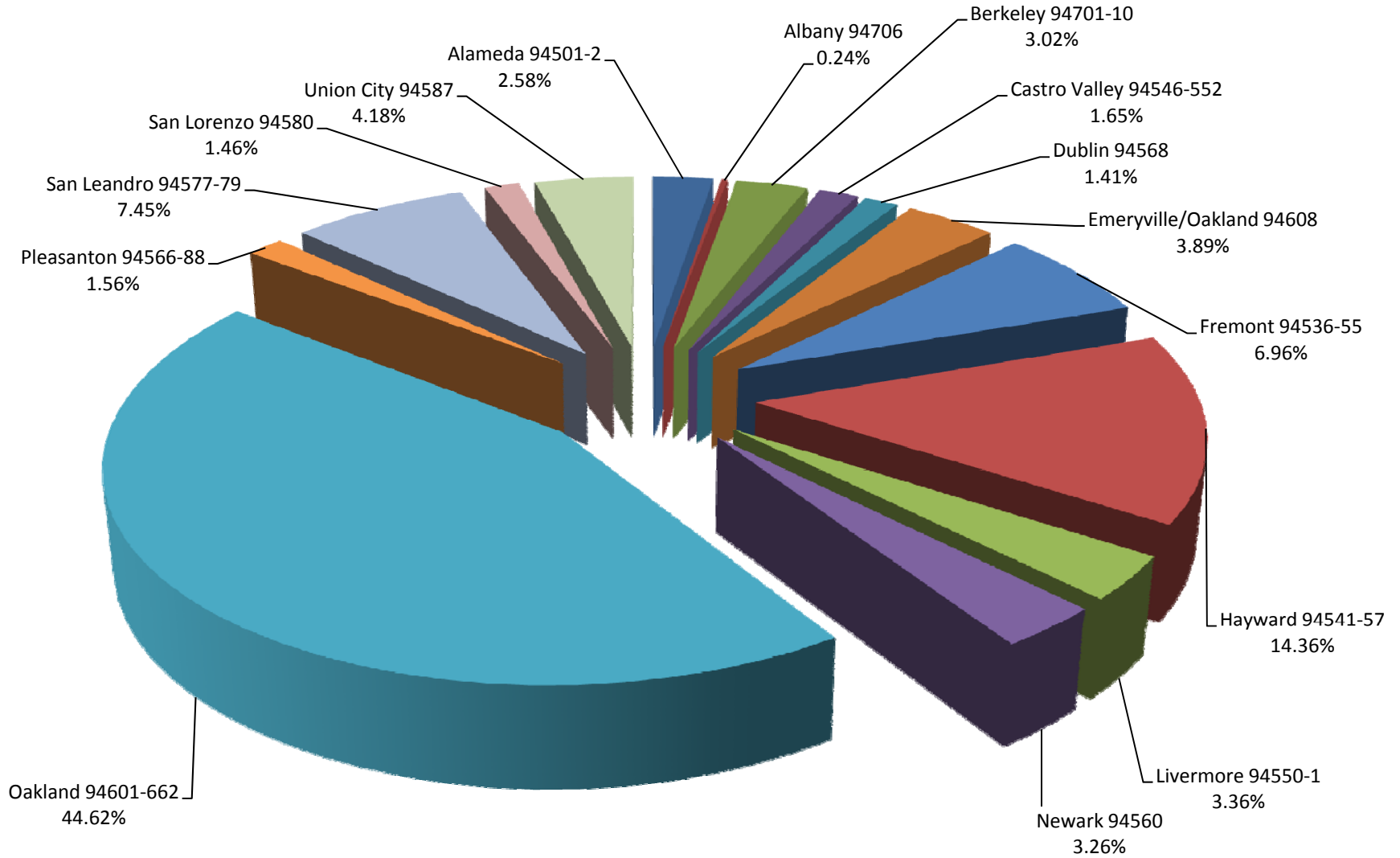
JANUARY 2010

(TOTAL CASES: 2,131)

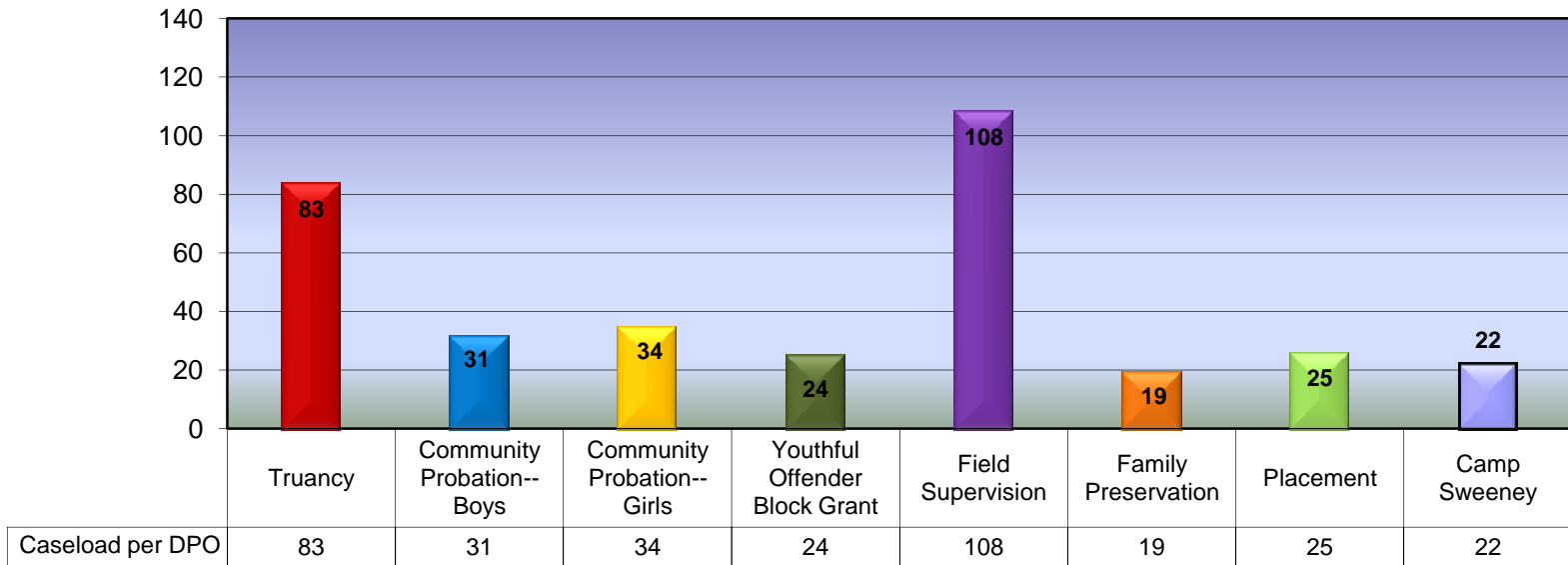


CONCENTRATION OF JUVENILE PROBATIONERS PER CITY/ZIP CODE WITHIN ALAMEDA COUNTY

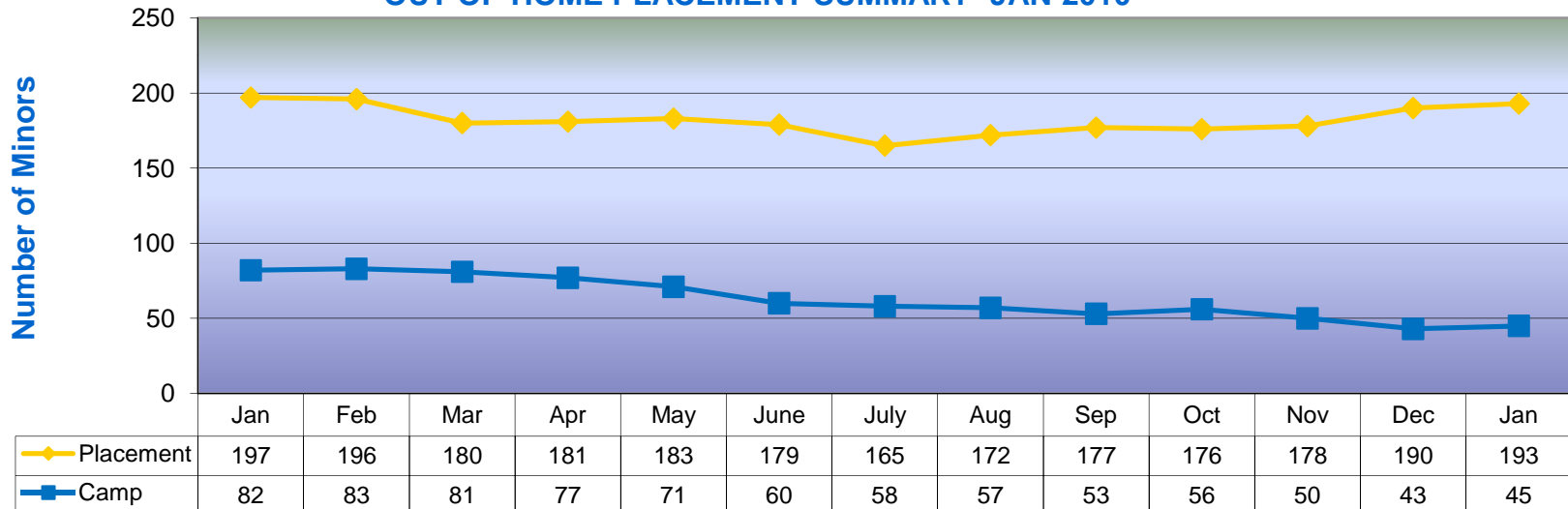
(Effective 2/1/10)



JUVENILE SUPERVISION AVERAGE CASELOAD PER DPO--JAN 2010



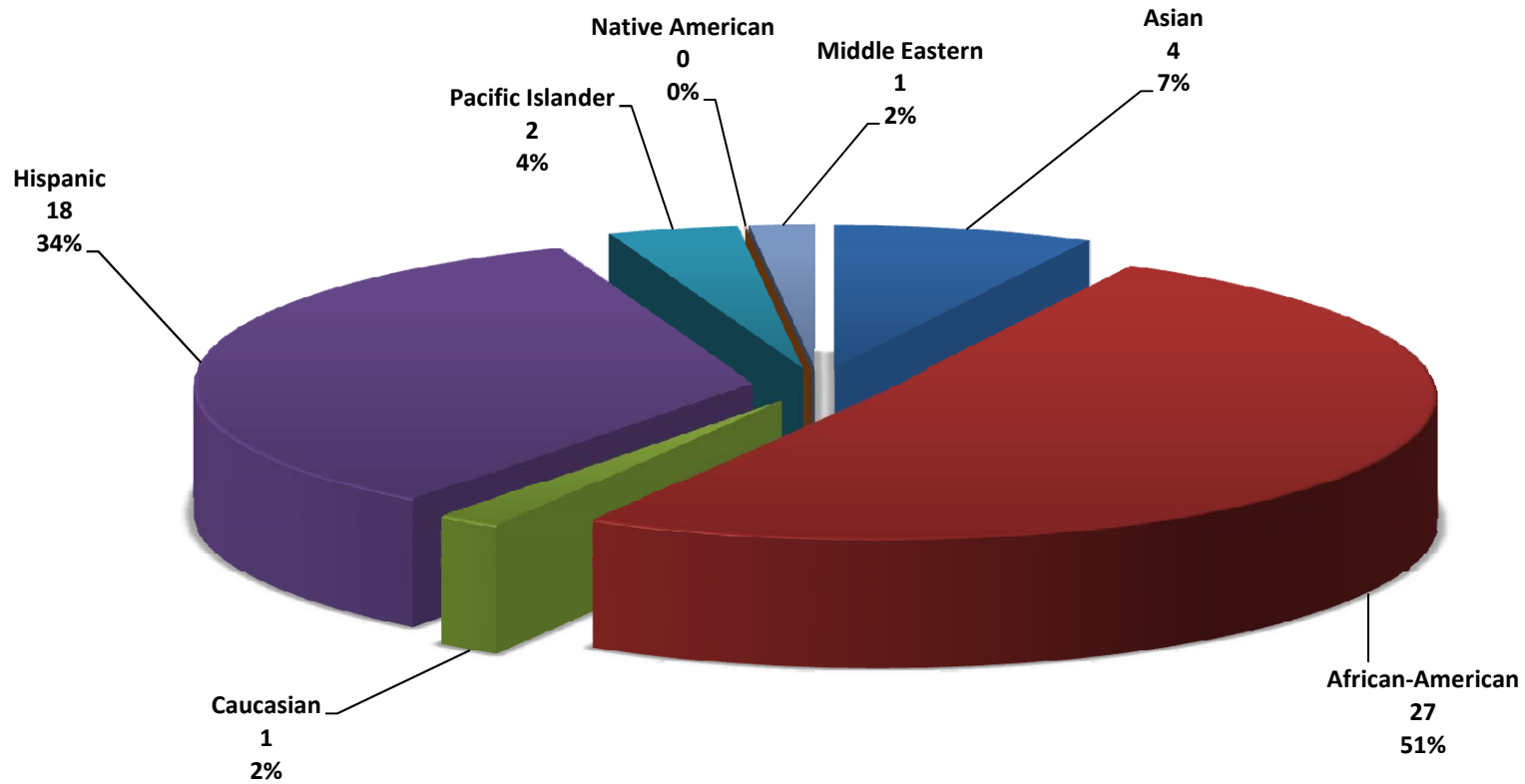
OUT-OF-HOME PLACEMENT SUMMARY--JAN 2010



The Placement Unit carries out the order of the Court removing the custody of a child from his or her parents or legal guardians and placing the child safely out of home "only when his/her welfare or safety and protection of the public cannot be adequately safeguarded without removal" (Section 602 W&i Code).

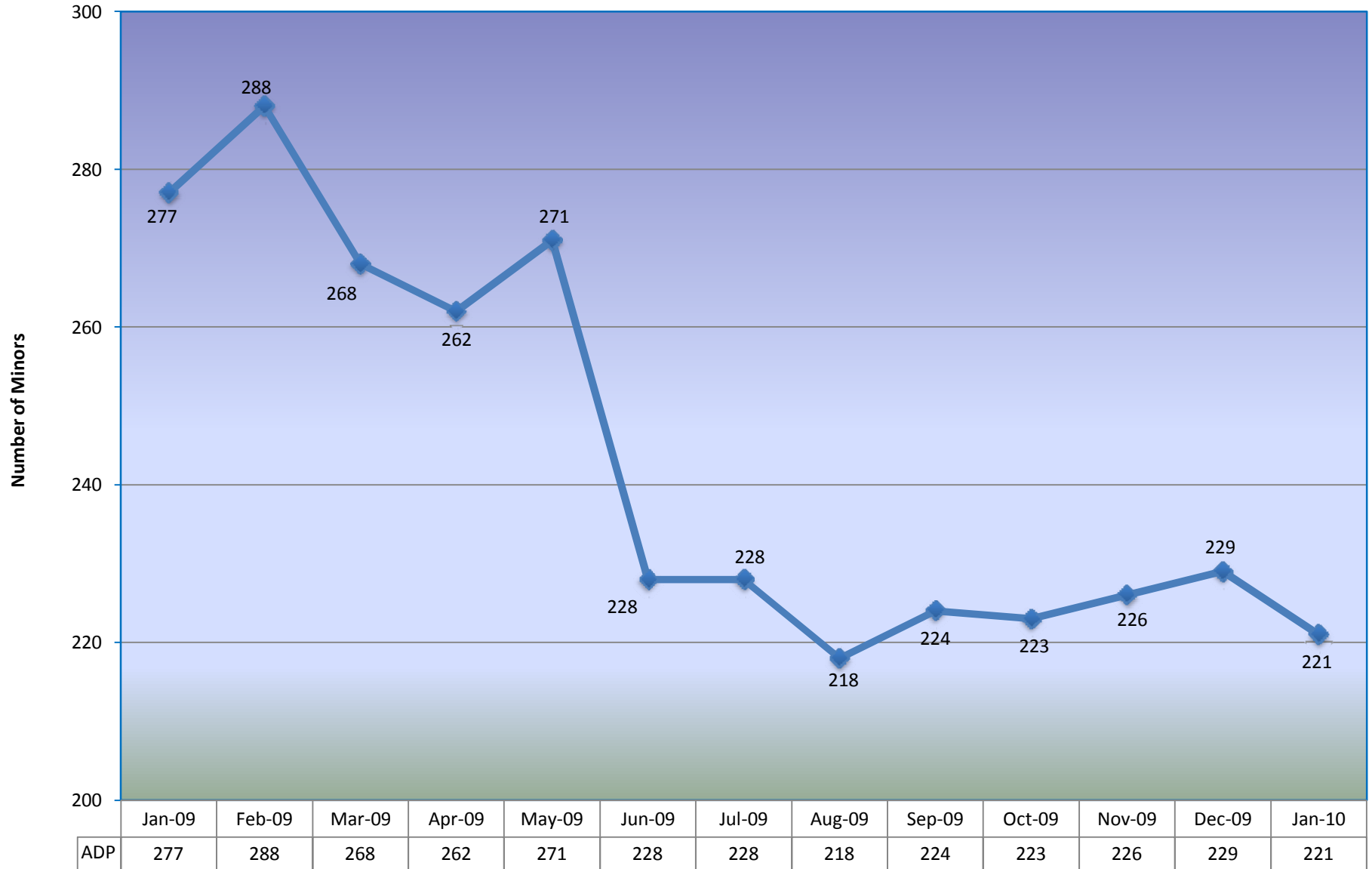
Camp Wilmont Sweeney is a local alternative to Group Home placements. Out-of-home Placement and Camp Sweeney both have two fundamental goals for minors: Rehabilitation and Reunification/Emancipation.

CAMP WILMONT SWEENEY ADMISSIONS BY ETHNICITY January 2010



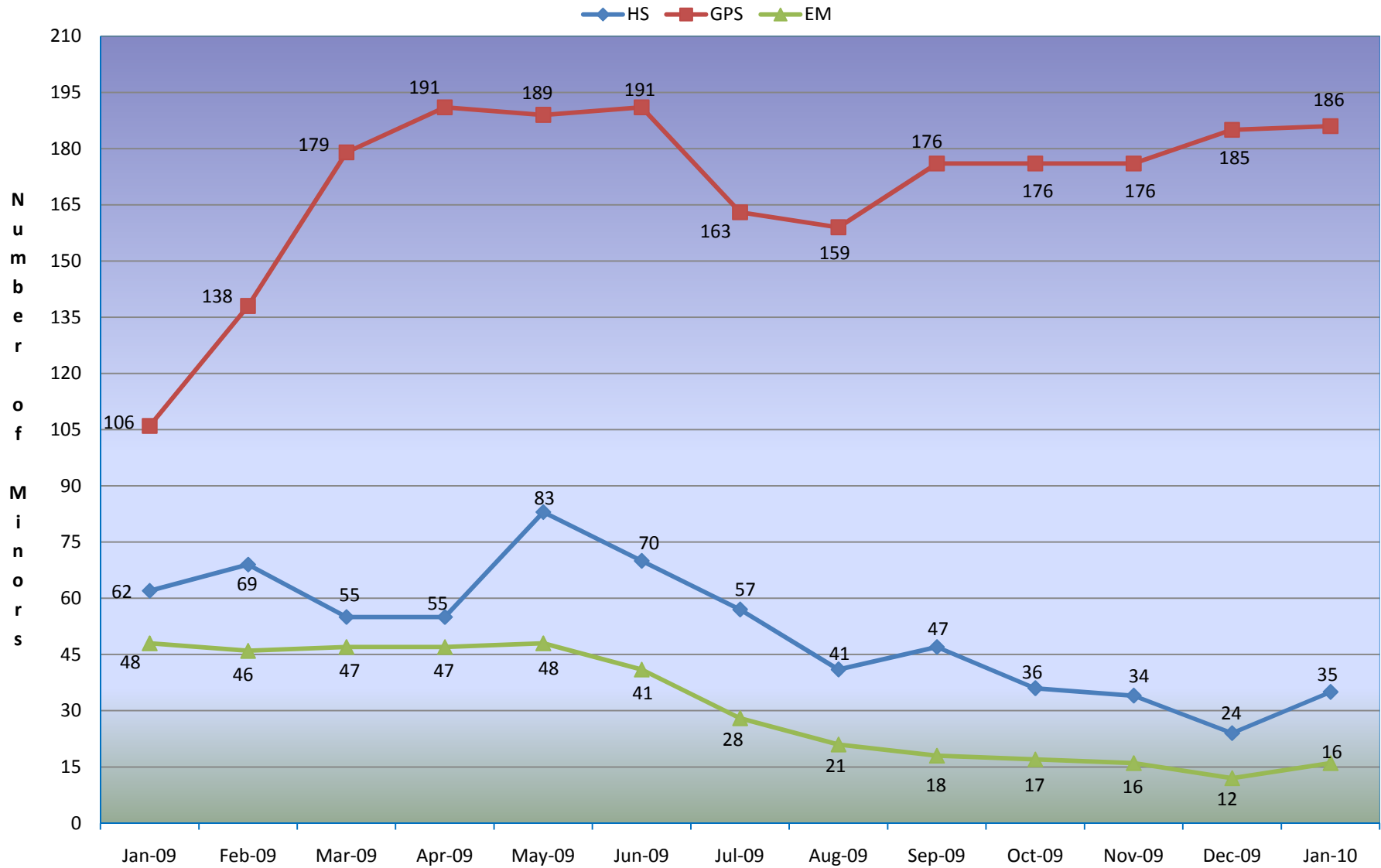
Camp Sweeney is a residential treatment program for male youth who are ordered by the Juvenile Court to be committed to the Camp to complete a six to nine month rehabilitation and educational program. After completion of the in-camp program minors graduate to after-care furlough supervision services for a six-month period.

JUVENILE HALL AVERAGE DAILY POPULATION * (ADP) Jan 2009 - Jan 2010



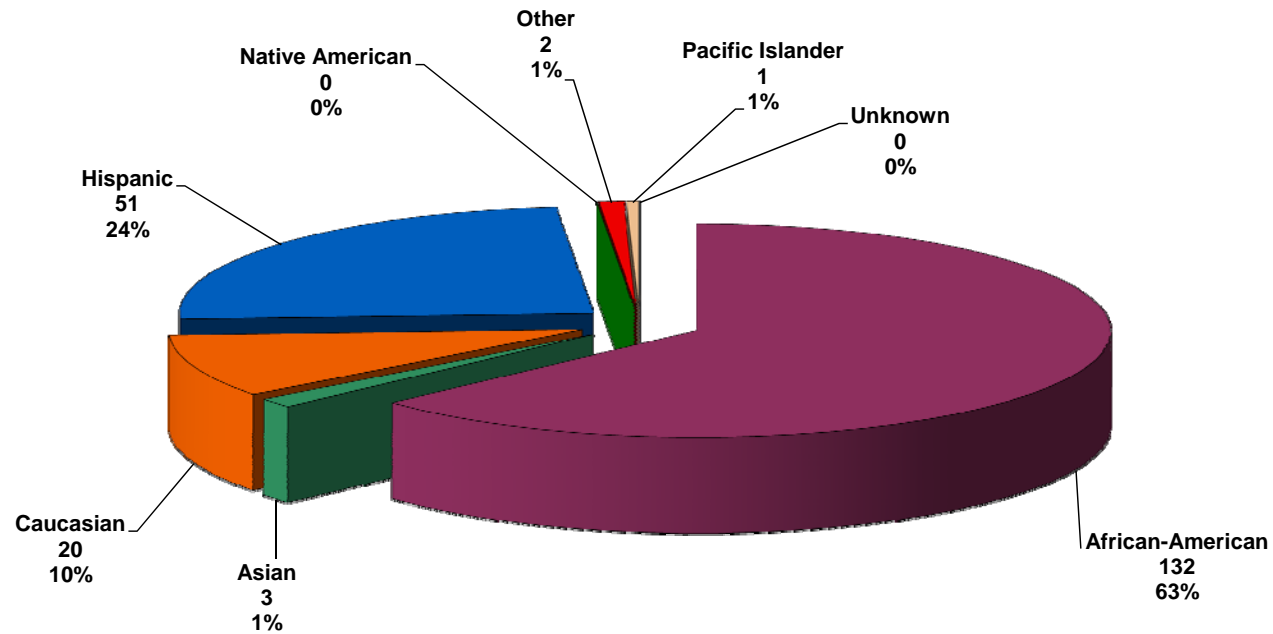
*** Highest One Day Population at Juvenile Hall : 244**

Alternatives to Detention
Home Supervision - Global Positioning Satellite - Electronic Monitoring
Jan 2009 - Jan 2010



JUVENILE HALL BOOKING REPORT--BY ETHNICITY - by Ethnicity Jan-10

Ethnicity	Male	Female	Total
African-American	104	28	132
Asian	2	1	3
Caucasian	14	6	20
Hispanic	47	4	51
Native American	0	0	0
Other	2	0	2
Pacific Islander	1	0	1
Unknown	0	0	0
Total Bookings	170	39	209

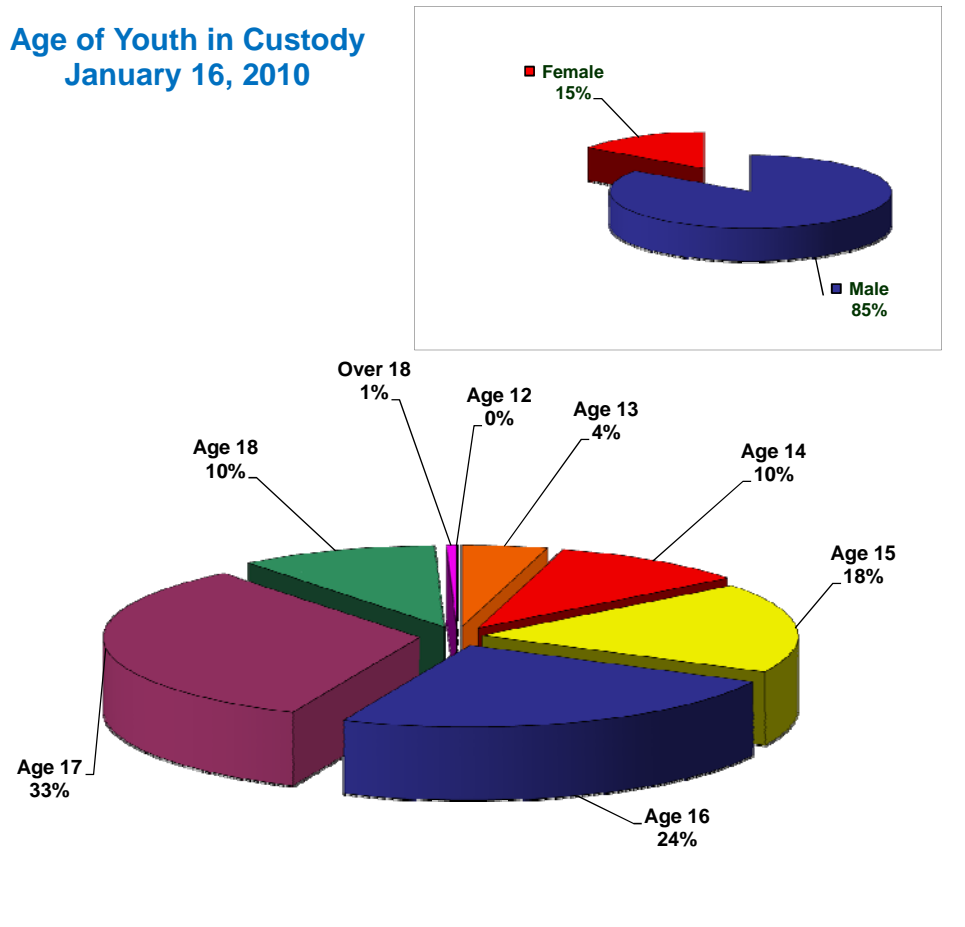


JUVENILE HALL ONE-DAY SNAPSHOT - POPULATION

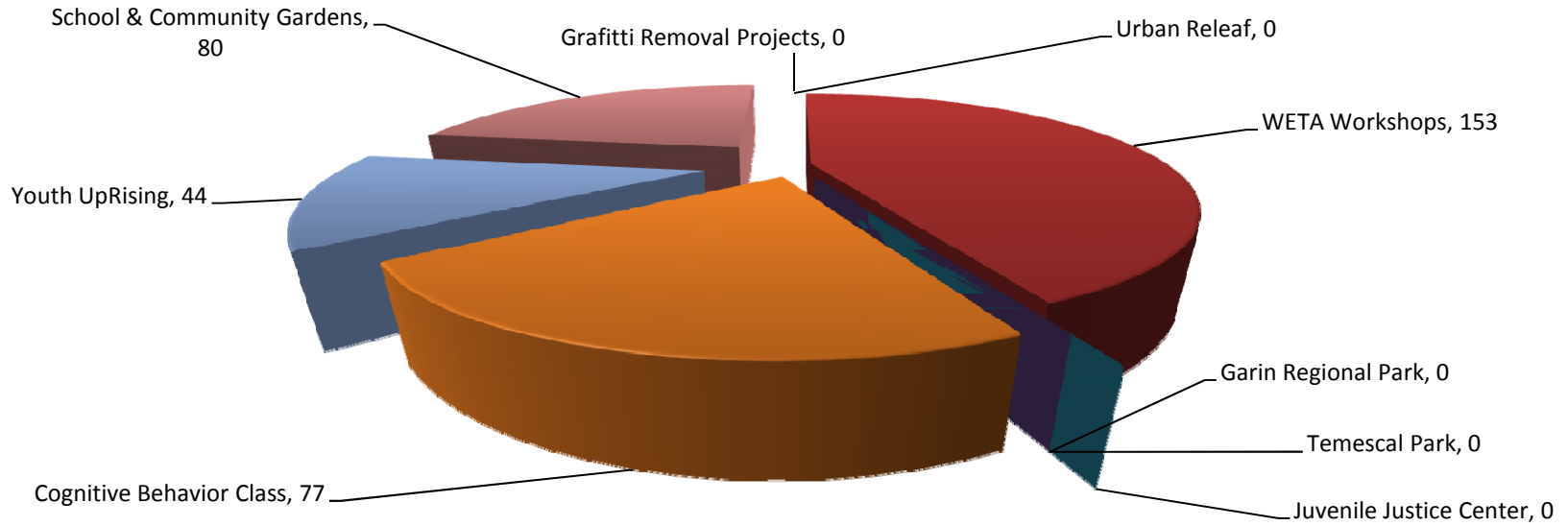
January 16, 2010

Age	Male	Female	Total
Age Under 12	2	0	2
Age 12	0	0	0
Age 13	8	1	9
Age 14	15	6	21
Age 15	33	4	37
Age 16	41	9	50
Age 17	59	9	68
Age 18	18	3	21
Over 18	1	0	1
Total	177	32	209

Age of Youth in Custody
January 16, 2010



Weekend Training Academy Jan 2010
Total Number of Minors on WETA: 354
Minors Graduating in January: 26



Work and Activity Sites:

- *Temescal Park (Broadway & Warren Freeway, Oakland)
- *Garin Regional Park (Garin Avenue, Hayward)
- *Juvenile Justice Center (2500 Fairmont Drive, San Leandro)
- *Cognitive Behavior Class (2300 Fairmont Drive, San Leandro)
- *Youth UpRising (8711 MacArthur Blvd., Oakland)
- *Urban Releaf (835 57th Street, Oakland)
- *WETA Workshops (2300 Fairmont Drive, San Leandro)
- *School & Community Gardens (33 Hiller Drive, Oakland)
- *Grafitti Removal Projects (Unincorporated Areas of Alameda County)

Tasks (dependent upon worksite):

- *Weed Abatement - the removal of weeds in areas of worksite.
- *Landscaping - clearing of dirt paths, pruning shrubs, etc.
- *Grounds Clearing/Cleanup - disposing of garbage & plant trimmings.
- *Loading items onto Truck - various objects, debris (nothing heavy).
- *Ditch Digging - irrigating purposes of specific areas.
- *Spreading Wood Chips - laying out over wide sections of worksite.
- *Pruning - cutting back and shaping plants.
- *Litter Removal
- *Car Wash - car washing at specific sites.
- *Inventory - Institutional Supervisor assigns where, what, when.
- *Fence Building/Repair - assisting ranger with construction of fencing.