

APPENDIX H

NOISE

This page intentionally left blank

Noise Appendix

Long Term Noise Measurement Graphs for Site 1

Thursday (5/6/2021) is on the first two graphs.

Note: The 1st graph presents Leq, Lmax, L2, and L8. The 2nd graph presents Leq and Lmax (again for reference) and L25 and L50.

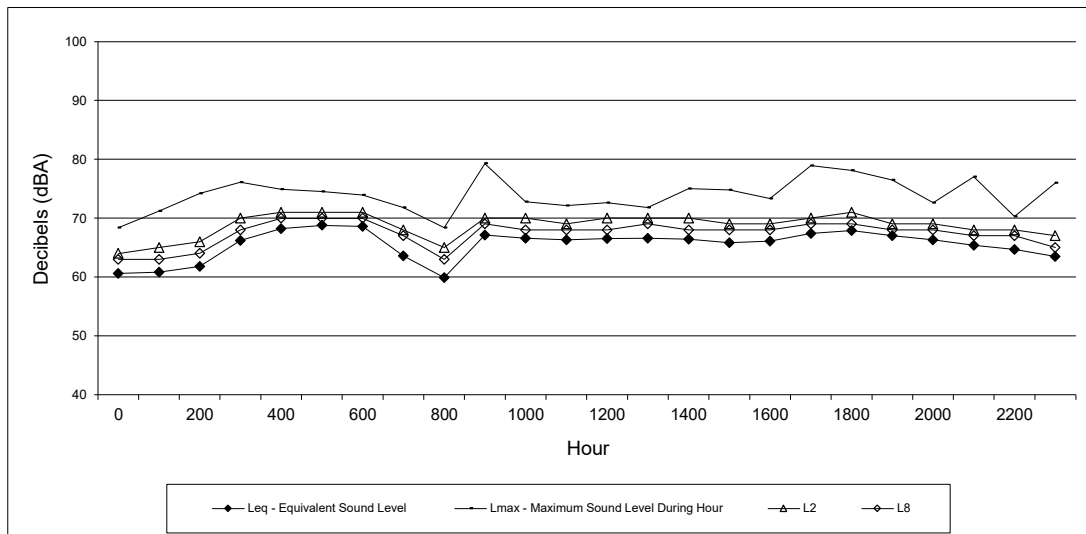
Friday (5/7/2021) is on the second two graphs

Note: The 1st graph presents Leq, Lmax, L2, and L8. The 2nd graph presents Leq and Lmax (again for reference) and L25 and L50.

Saturday (5/8/2021) is on the last two graphs

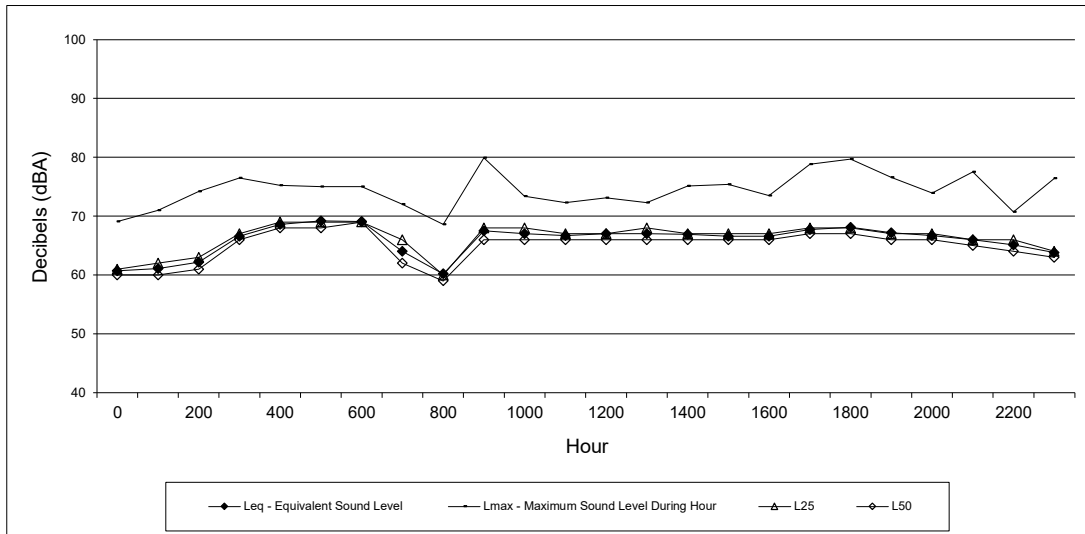
Note: The 1st graph presents Leq, Lmax, L2, and L8. The 2nd graph presents Leq and Lmax (again for reference) and L25 and L50.





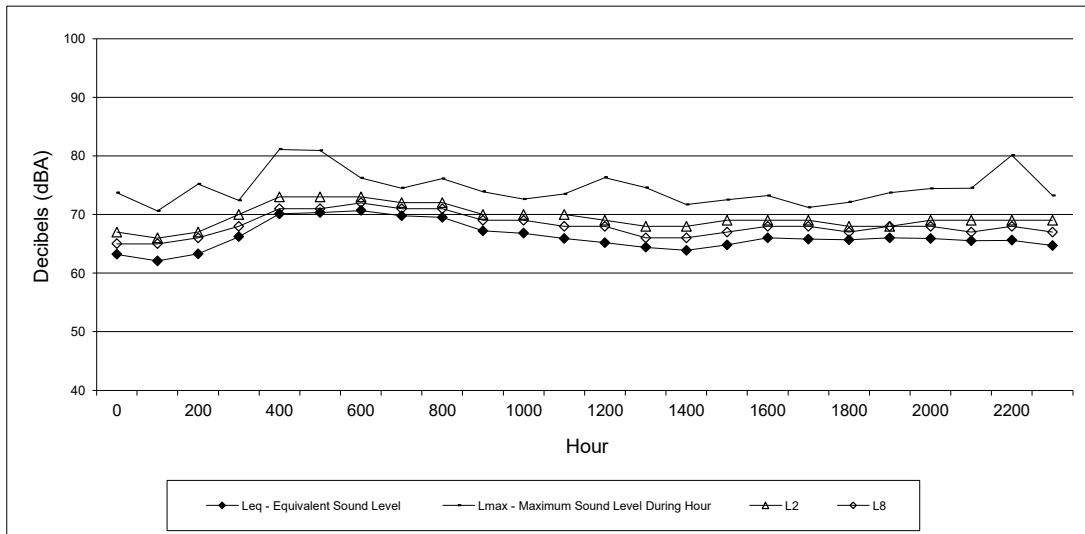
Site 1: (1/2) West area of Project site, approximately 350 feet north of Interstate 580.
Thursday May 6, 2021

Hour	Leq - Equivalent Sound Level	Lmax - Maximum Sound Level During Hour	L2	L8
0	61	68	64	63
100	61	71	65	63
200	62	74	66	64
300	66	76	70	68
400	68	75	71	70
500	69	75	71	70
600	69	74	71	70
700	64	72	68	67
800	60	68	65	63
900	67	79	70	69
1000	67	73	70	68
1100	66	72	69	68
1200	67	73	70	68
1300	67	72	70	69
1400	66	75	70	68
1500	66	75	69	68
1600	66	73	69	68
1700	67	79	70	69
1800	68	78	71	69
1900	67	77	69	68
2000	66	73	69	68
2100	65	77	68	67
2200	65	70	68	67
2300	64	76	67	65



Site 1: (2/2) West area of Project site, approximately 350 feet north of Interstate 580. Thursday May 6, 2021

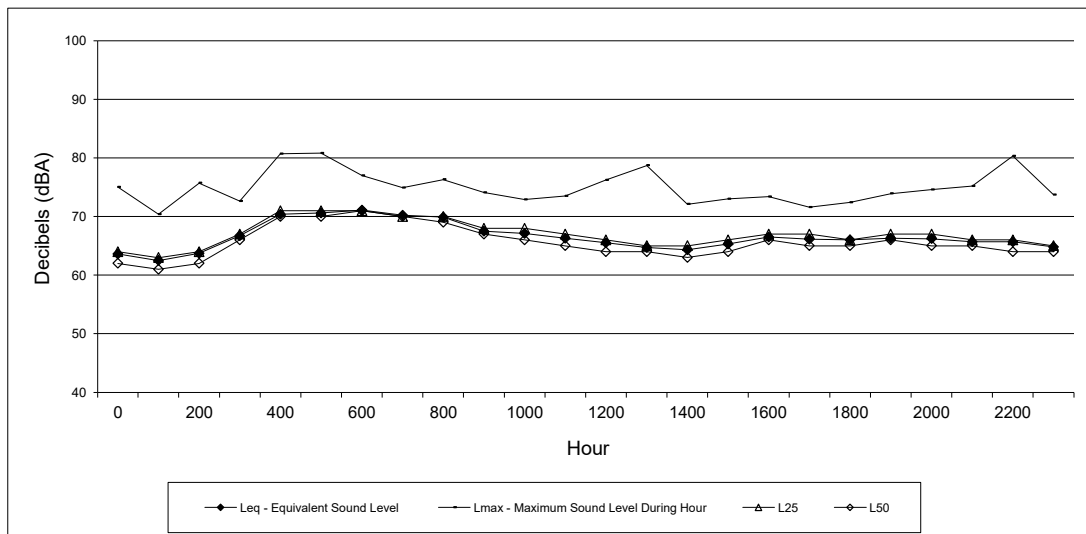
Hour	Leq - Equivalent Sound Level	Lmax - Maximum Sound Level During Hour	L25	L50
0	61	69	61	60
100	61	71	62	60
200	62	74	63	61
300	67	77	67	66
400	69	75	69	68
500	69	75	69	68
600	69	75	69	69
700	64	72	66	62
800	60	69	60	59
900	68	80	68	66
1000	67	73	68	66
1100	67	72	67	66
1200	67	73	67	66
1300	67	72	68	66
1400	67	75	67	66
1500	67	75	67	66
1600	67	74	67	66
1700	68	79	68	67
1800	68	80	68	67
1900	67	77	67	66
2000	67	74	67	66
2100	66	78	66	65
2200	65	71	66	64
2300	64	76	64	63



Site 1: (1/2) West area of Project site, approximately 350 feet north of Interstate 580. Friday May 7, 2021

Hour	Leq - Equivalent Sound Level	Lmax - Maximum Sound Level During Hour	L2	L8
0	63	74	67	65
100	62	71	66	65
200	63	75	67	66
300	66	72	70	68
400	70	81	73	71
500	70	81	73	71
600	71	76	73	72
700	70	75	72	71
800	70	76	72	71
900	67	74	70	69
1000	67	73	70	69
1100	66	74	70	68
1200	65	76	69	68
1300	64	75	68	66
1400	64	72	68	66
1500	65	73	69	67
1600	66	73	69	68
1700	66	71	69	68
1800	66	72	68	67
1900	66	74	68	68
2000	66	74	69	68
2100	66	75	69	67
2200	66	80	69	68
2300	65	73	69	67

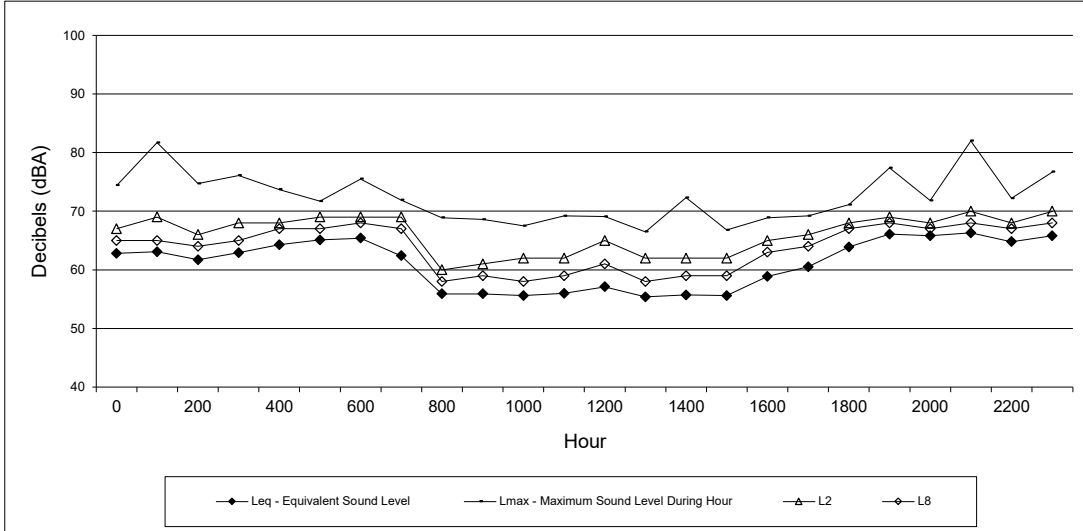
CNEL: 74



Site 1: (2/2) West area of Project site, approximately 350 feet north of Interstate 580. Friday May 7, 2021

Hour	Leq - Equivalent Sound Level	Lmax - Maximum Sound Level During Hour	L25	L50
0	64	75	64	62
100	63	70	63	61
200	64	76	64	62
300	67	73	67	66
400	70	81	71	70
500	71	81	71	70
600	71	77	71	71
700	70	75	70	70
800	70	76	70	69
900	68	74	68	67
1000	67	73	68	66
1100	66	74	67	65
1200	66	76	66	64
1300	65	79	65	64
1400	64	72	65	63
1500	65	73	66	64
1600	67	73	67	66
1700	66	72	67	65
1800	66	72	66	65
1900	66	74	67	66
2000	66	75	67	65
2100	66	75	66	65
2200	66	80	66	64
2300	65	74	65	64

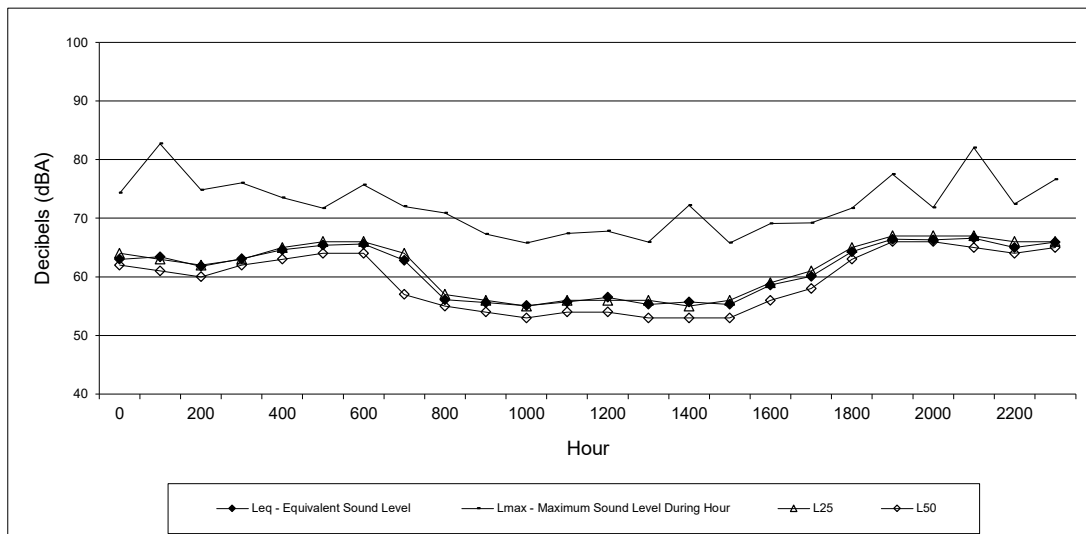
CNEL: 74



Site 1: (1/2) West area of Project site, approximately 350 feet north of Interstate 580. Saturday May 8, 2021

Hour	Leq - Equivalent Sound Level	Lmax - Maximum Sound Level During Hour	L2	L8
0	63	74	67	65
100	63	82	69	65
200	62	75	66	64
300	63	76	68	65
400	64	74	68	67
500	65	72	69	67
600	65	76	69	68
700	62	72	69	67
800	56	69	60	58
900	56	69	61	59
1000	56	68	62	58
1100	56	69	62	59
1200	57	69	65	61
1300	55	67	62	58
1400	56	72	62	59
1500	56	67	62	59
1600	59	69	65	63
1700	61	69	66	64
1800	64	71	68	67
1900	66	77	69	68
2000	66	72	68	67
2100	66	82	70	68
2200	65	72	68	67
2300	66	77	70	68

CNEL: 71



Site 1: (2/2) West area of Project site, approximately 350 feet north of Interstate 580. Saturday May 8, 2021

Hour	Leq - Equivalent Sound Level	Lmax - Maximum Sound Level During Hour	L25	L50
0	63	74	64	62
100	63	83	63	61
200	62	75	62	60
300	63	76	63	62
400	65	74	65	63
500	65	72	66	64
600	66	76	66	64
700	63	72	64	57
800	56	71	57	55
900	56	67	56	54
1000	55	66	55	53
1100	56	67	56	54
1200	57	68	56	54
1300	55	66	56	53
1400	56	72	55	53
1500	55	66	56	53
1600	59	69	59	56
1700	60	69	61	58
1800	64	72	65	63
1900	66	78	67	66
2000	66	72	67	66
2100	67	82	67	65
2200	65	72	66	64
2300	66	77	66	65

CNEL: 71